



Safe Routes to School

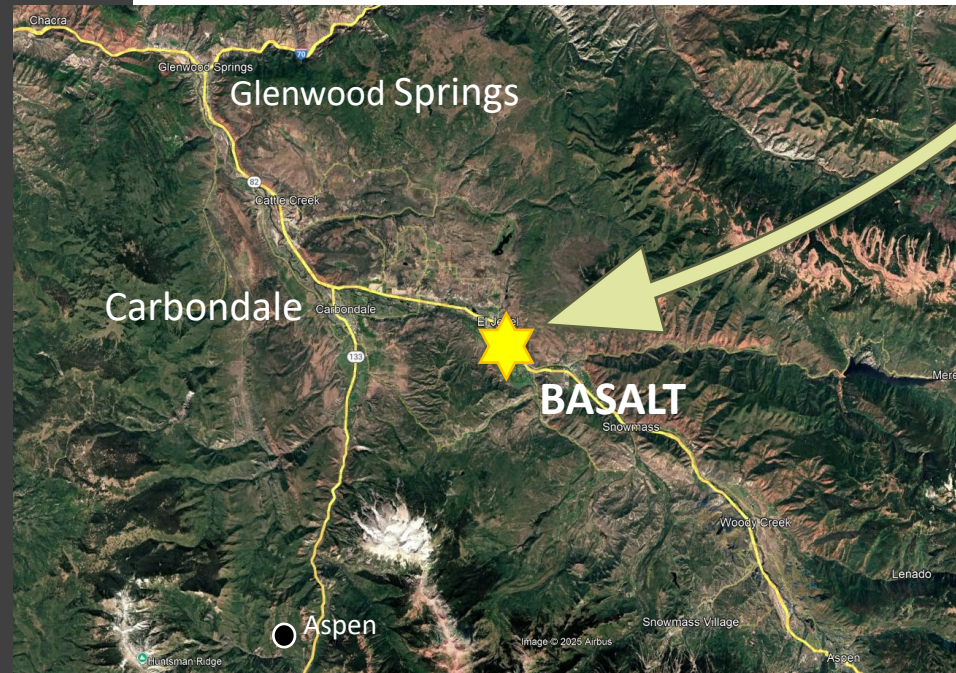
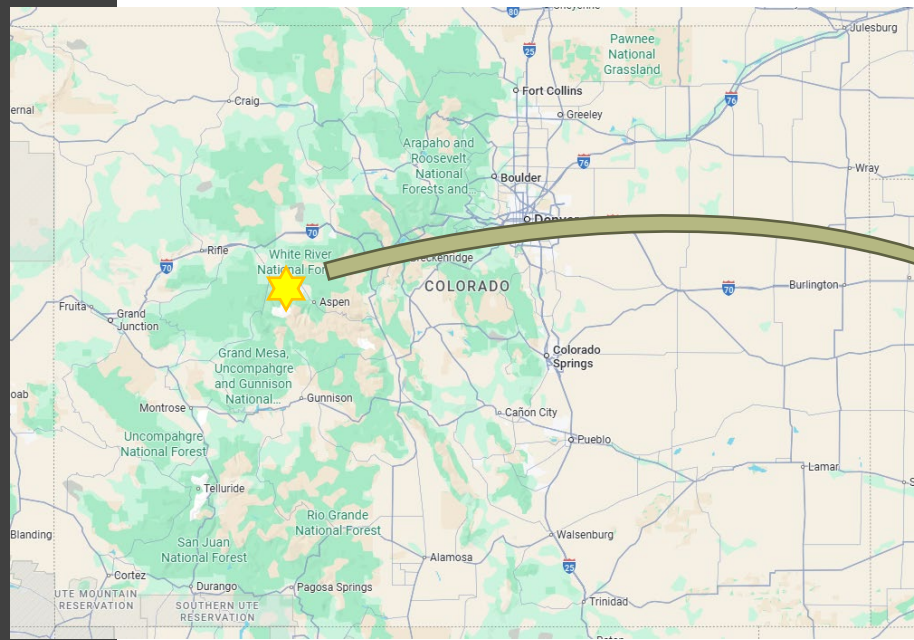
Town of Basalt, Colorado

Catherine Christoff, PE
Town Engineer

October 1, 2025

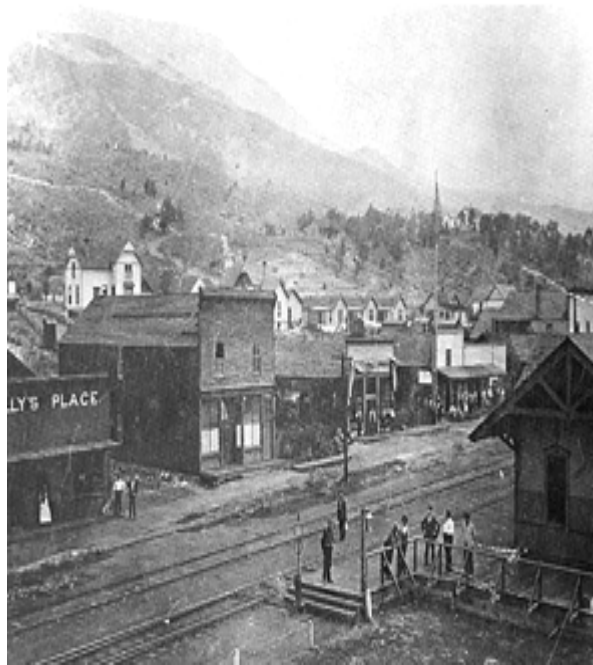


Basalt is a small mountain town (pop. 4,000) located at the confluence of the Fryingpan and Roaring Fork Rivers in the Roaring Fork Valley, about 20 minutes from Aspen. Known for its historic downtown, Gold Medal fly-fishing waters, and access to world-class outdoor recreation, Basalt blends its roots as a railroad and mining town with a progressive vision for sustainability and community.



Historic Downtown Basalt

From rails to... vehicles to... multimodal oriented design.



Innovation and Engagement



In January of 2024, Basalt-based **Design Workshop** donated its time and talent for the firm's annual Martin Luther King Jr. Day of Service. They collaborated with Basalt Girl Scout Troop 17080 for feedback and brainstorming.

Testing Concepts



The Town made temporary changes to the area to begin highlighting what is possible with temporary bulb outs, bollards to control traffic, and brightly colored rainbow crosswalks.

Improving Safety

Safe
Routes
to School
Project
Area



Invite the Community



 Basalt Education Foundation is in Basalt.
October 8, 2024 · 🌐

Get ready to Walk, Bike, & Roll to School tomorrow, October 9! Stop by our fun stations at Arbaney Park, the 7-11 Bridge, and in front of Basalt Elementary School for a high-five and some goodies on your way to class! Start your day with fresh air and smiles—see you there!

¡Prepárese para caminar, andar en bicicleta y rodar a la escuela mañana, 9 de octubre! ¡Pase por nuestras estaciones divertidas en Arbaney Park, el puente 7-11 y frente a la escuela primaria Basalt para chocar esos cinco y algunas delicias de camino a clase! Comience el día con aire fresco y sonrisas. ¡Nos vemos allí!

See translation




HOW DOES YOUR CHILD GET TO SCHOOL?
BIKE? WALK? BUS? CARPOOL?

PLEASE TAKE OUR PARENT SURVEY SO WE CAN IMPROVE SAFE AND FUN ACCESS TO SCHOOL FOR ALL CHILDREN.



COMO LLEGA SUS NIÑOS A LA ESCUELA?
BICICLETA? CAMINANDO? BUS? COMPARTIMÉNTO CARRO?

POR FAVOR RESPONDA A LA ENCUESTA PARA MEJORARÁ EL ACCESO A LA ESCUELA Y HACERLO MAS DIVERTIDO Y SEGURO PARA TODOS LOS NIÑOS.



ESCANEA AQUÍ PARA LA ENCUESTA
LA ENCUESTA ES ANÓNIMO + TOMA 5 MINUTOS

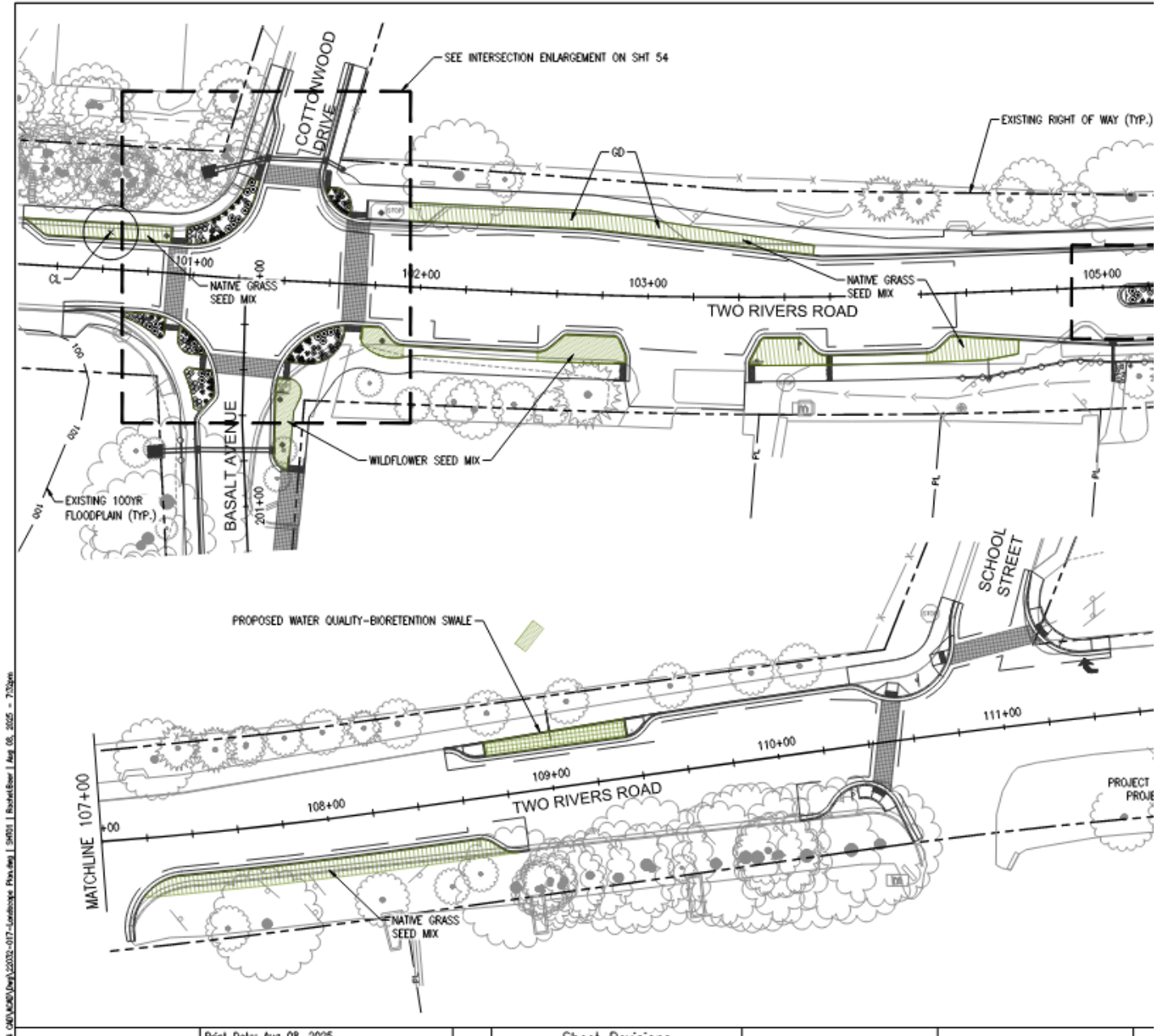


SCAN HERE FOR SURVEY
ANONYMOUS + TAKES 5 MINUTES



Project Timeline:

November 2024	SRTC Application
April 2025	Award Notification
June 2025	CDOT Kick-off Meeting
September 2025	CDOT 30% Plan Review
December 2025	CDOT 90% Plan Review
June 2026	Anticipated Ad Date



Questions?



CATHERINE CHRISTOFF, PE (she/her)
TOWN ENGINEER

office: 970.927.4701 | direct: 970.279.4384
catherine.christoff@basalt.net
101 Midland Ave. Basalt, CO 81621